

OMERO.UTU.FI USER GUIDE

WHAT IS OMERO?

OME Remote Objects (OMERO) is a modern client-server software platform for visualizing, managing, and annotating scientific image data. OMERO lets you import and archive your images, annotate and tag them, record your experimental protocols, and export images in a number of format and to collaborate with colleagues anywhere in the world.

TO GET STARTED WITH OMERO THREE THINGS ARE NECESSARY:

Username and password

please contact image-data@bioimaging.fi if you do not have credentials. It is not possible to access OMERO without credentials.

OMERO.insight desktop app

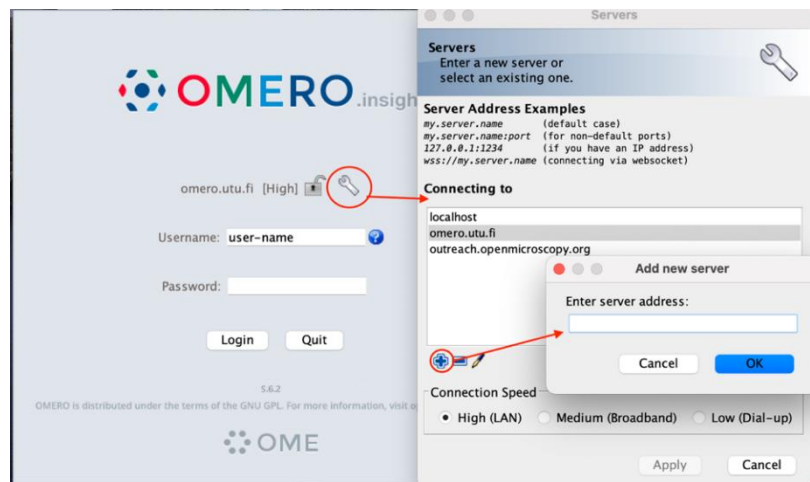
OMERO.insight desktop app is used to upload your image data to the server. Download the app here: <https://www.openmicroscopy.org/omero/downloads/>

OMERO.web app

OMERO.web is used to view, sort, annotate and share images. Log in to your web interface here omero.utu.fi using your credentials.



1. HOW TO UPLOAD IMAGES TO OMERO?

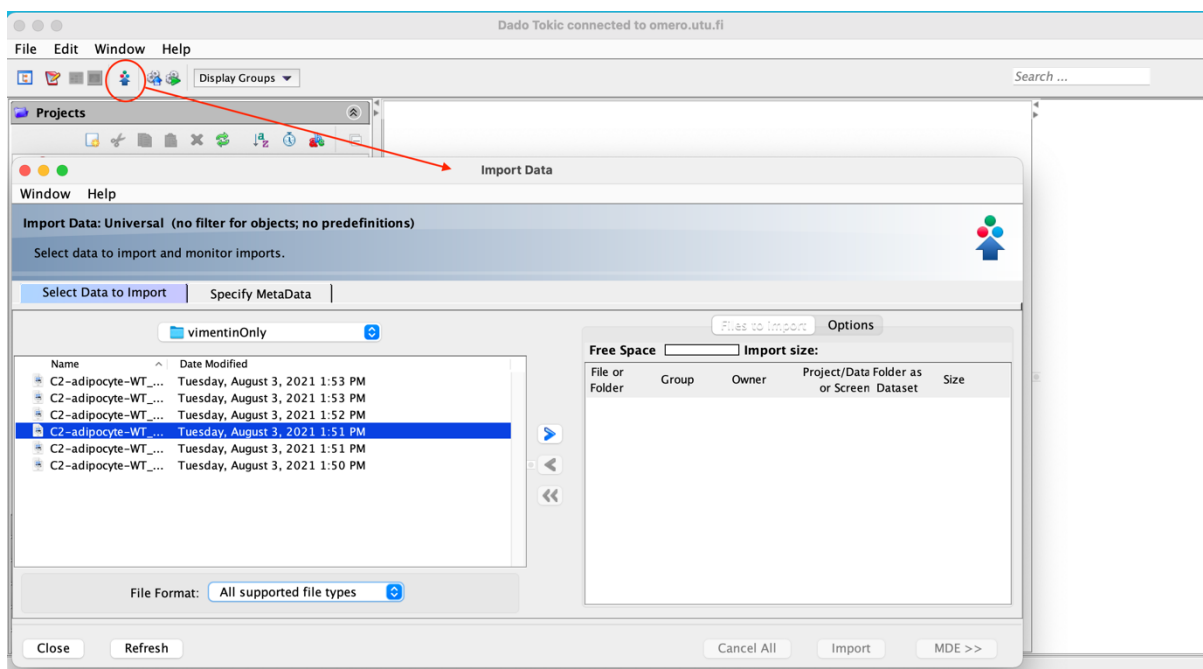
After downloading the OMERO.insight app (link above), log in with your OMERO credentials. If you are logging in to OMERO for the first time you need to add our server address to the list, by clicking on the wrench icon, that will open **Servers** tab. To add a new server, click on the + icon below the server list and you will be prompted to enter the server



address. Type in **omero.utu.fi** and press ok. Select the server from the server list and press apply.

After logging in, the user interface of OMERO containing different tabs (projects, screens, administration, attachments, tags, etc.) will open. You can navigate through by clicking on them.

You can import your image data by clicking the import icon , the import data window will open. Browse to the data (image(s) or folder(s)) you want to import, select and add it to the queue by clicking the arrow icon (). Clicking this arrow opens an import location window, where you select the desired OMERO-project for your data. It is possible to select an already existing dataset or create a new dataset. If there is no dataset selected, a new project will be automatically created. After all the images are selected and added to the queue, you can import them to the OMERO server by clicking import on the bottom right corner of the window. You can follow the progress of importing in a new window. To view your imported images on the server user interface, remember to refresh the view by clicking the refresh icon. Your images are now uploaded to the OMERO server and are accessible for viewing, annotations and tagging after every login.



2. HOW TO VIEW IMAGES THROUGH OMERO.WEB?

Navigate to <https://omero.utu.fi> through your browser and log in by typing your credentials. In the user interface you can browse through your images and open them in OMERO.iviewer by double clicking the image. In the full view mode, you can see the info and adjust histogram, add ROIs etc.

Detailed instruction to how to operate in OMERO.web:

<https://www.openmicroscopy.org/omero/features/view/>